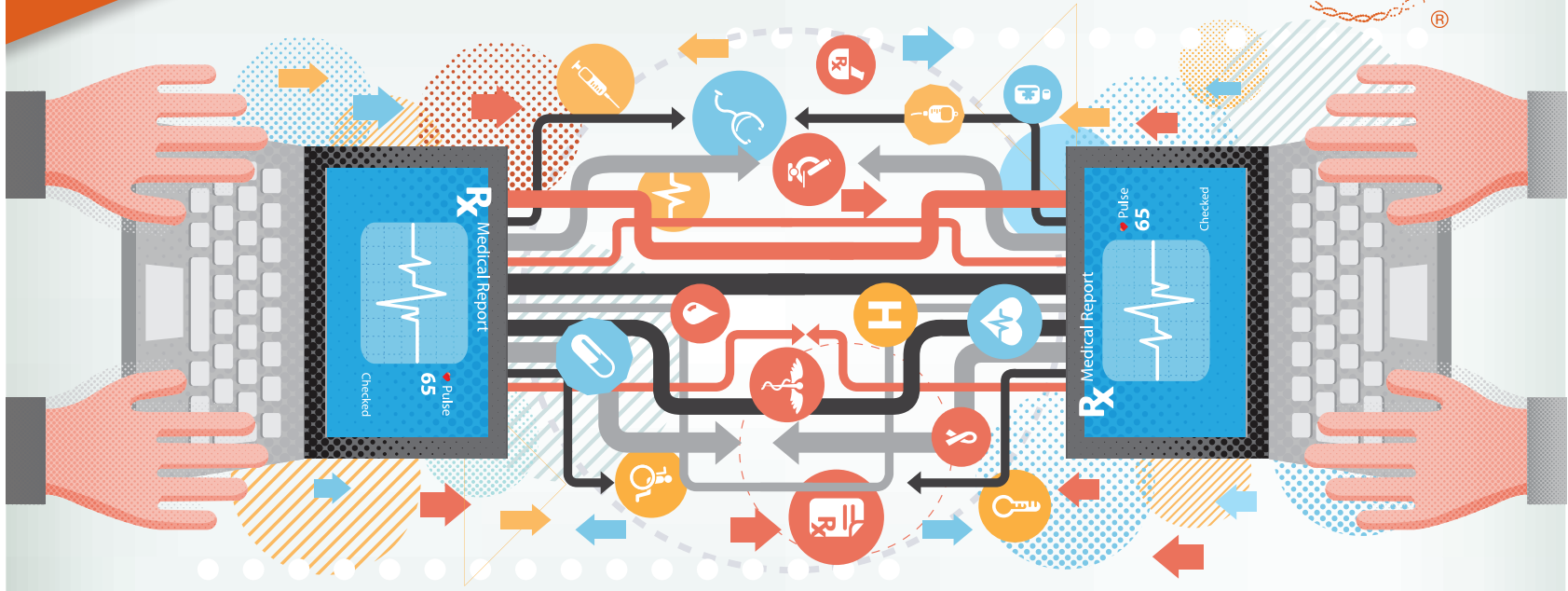


ASH MEMBER BENEFIT



Get advice on difficult cases from specialists in the field.

Consult a Colleague

The Consult-a-Colleague program is an ASH member benefit that facilitates the exchange of information and treatment strategies between ASH members and volunteer specialists in the following categories:

- Anemias
- Hemoglobinopathies
- Hematopoietic Cell Transplantation
- Hemostasis/Thrombosis
- Leukemias
- Lymphomas
- Lymphoproliferative Disorders
- Multiple Myeloma & Waldenström Macroglobulinemia
- Myeloproliferative Disorders
- Myelodysplastic Syndromes
- Thrombocytopenias

Submit a request at www.hematology.org/consult and receive a response within two business days.